

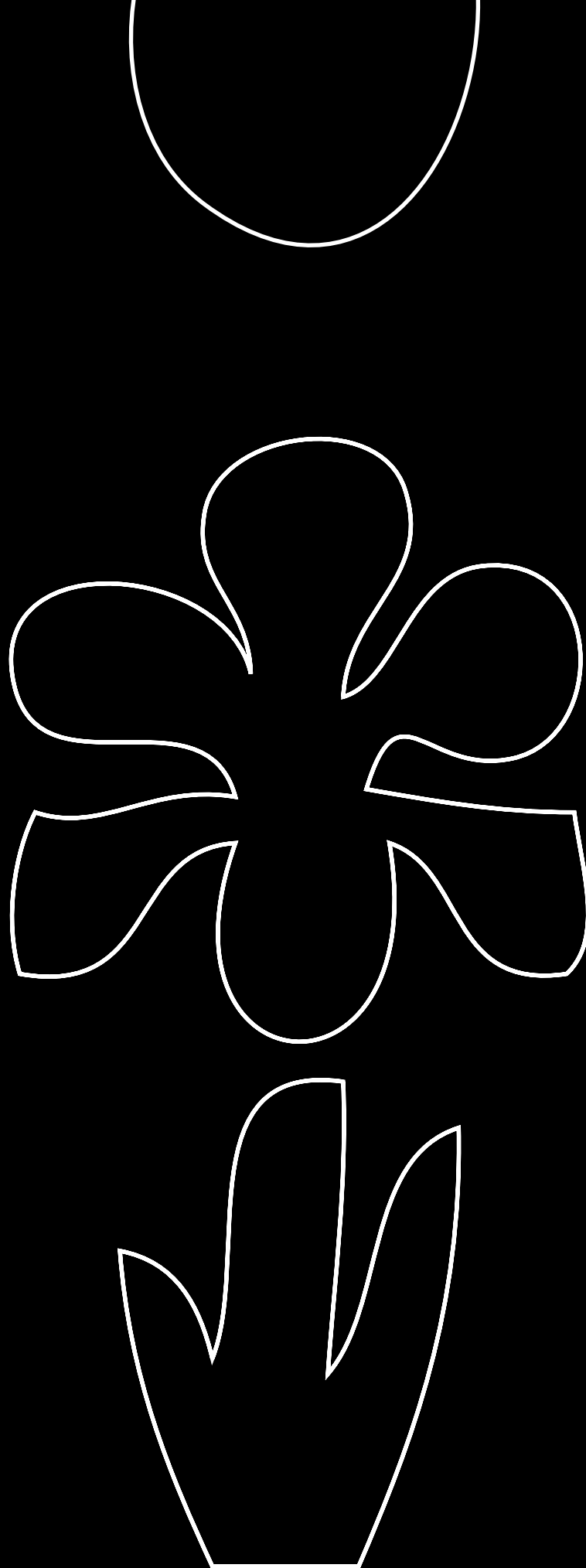
Iris U.S. Customer Service
800.323.9906
www.irisus.com



USIRISTC13



Made in the USA



Travertini Al Contro





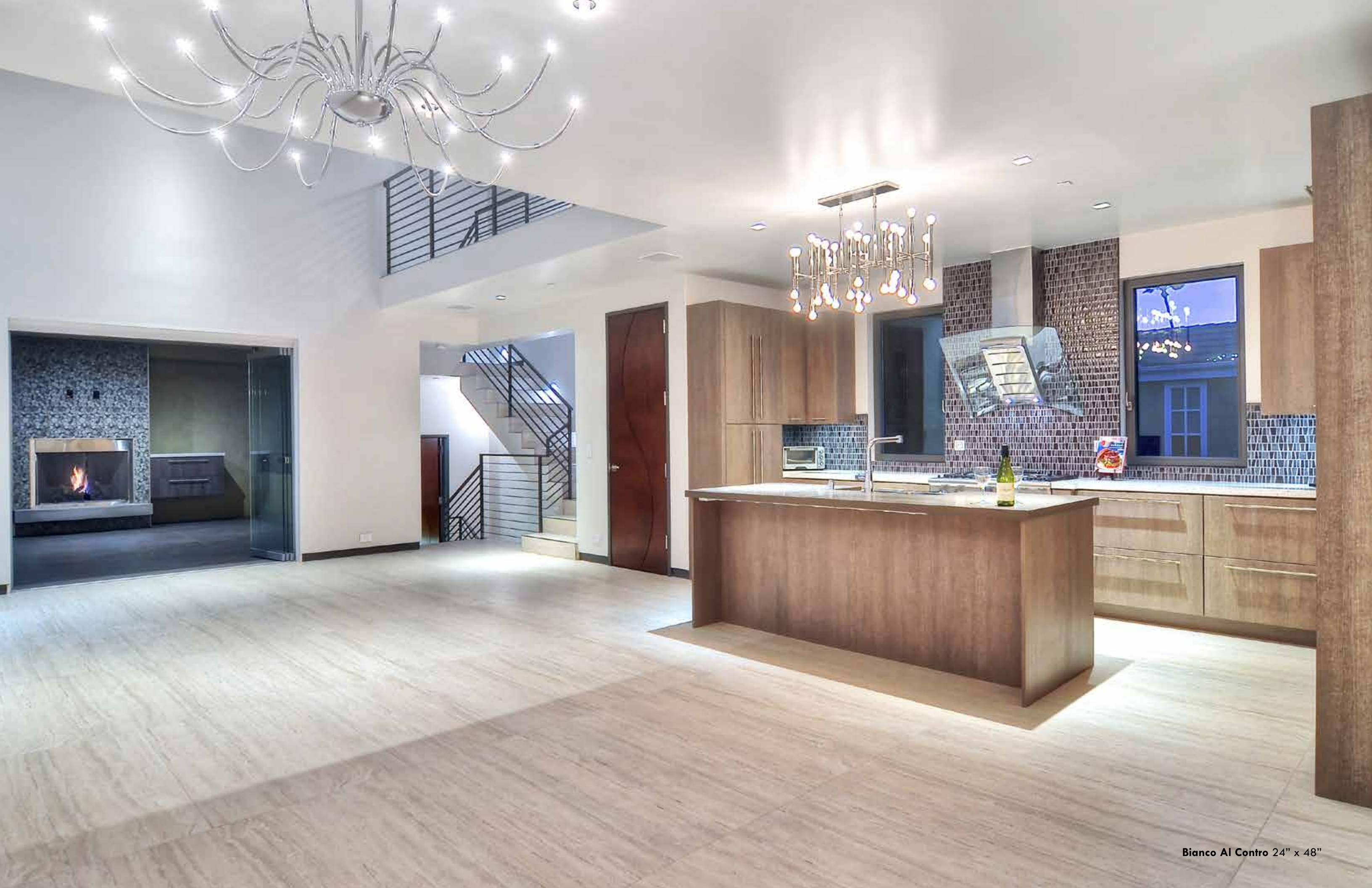


Argento Al Contro 24" x 48"

Travertini Al Contro Collection



Argento Al Contro



Travertini Al Contro Collection



Bianco Al Contro



Grigio Al Contro



Argento Al Contro



24 x 48



8 x 48



12 x 24



6 x 24

Bianco Al Contro

IRG2448112

IRG0848112

IRG1224112

IRG0624112

Grigio Al Contro

IRG2448113

IRG0848113

IRG1224113

IRG0624113

Argento Al Contro

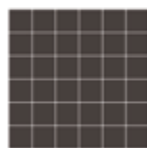
IRG2448114

IRG0848114

IRG1224114

IRG0624114

Mosaics & Trim



Mosaic

2 x 2 mesh mounted on 12 x 12 sheet



Brick 03 Mosaic

2 x 6 mesh mounted on 12 x 12 sheet



Bullnose

4 x 24

Bianco Al Contro

IRG12M112P

IRG12MB3112

IRG424BT112

Grigio Al Contro

IRG12M113P

IRG12MB3113

IRG424BT113

Argento Al Contro

IRG12M114P

IRG12MB3114

IRG424BT114



Grigio Al Contro 24" x 48"



Argento Al Contro & Grigio Al Contro various sizes

C1028
COF
 Dry ≥ 0.75
 Wet ≥ 0.60

Acutest
DCOF
 Wet ≥ 0.42

Travertini Al Contro Tech Specs

PHYSICAL PROPERTIES	TEST	INDUSTRY STANDARDS	IRIS US RESULTS COLORED BODY
Water Absorption	ASTM C373	0.5% Maximum	≤ 0.1%
Size			
Calibrated (non rectified)	ASTM C499	• Range of Thickness (inch) 0.040	≤ 0.040
	ASTM C499	• Average Facial Dimension ± 0.50%	≤ ± 0.50%
	ASTM C485	• Warpage ± 75% on any edge	≤ ± 0.75%
	ASTM C485	• Warpage ± 50% on diagonal	≤ ± 0.50%
	ASTM C502	• Wedging ± 0.50%	≤ ± 0.50%
Rectified	ASTM C499	• Range of Thickness (inch) 0.040	≤ 0.040
	ASTM C499	• Average Facial Dimension ± 0.25%	≤ 0.25%
	ASTM C485	• Warpage ± 0.40% on any edge	≤ 0.40%
	ASTM C485	• Warpage ± 0.40% on diagonal	≤ 0.40%
	ASTM C502	• Wedging ± 0.25%	≤ 0.25%
Bond Strength	ASTM C482	50 psi or greater	> 200 psi
Deep Abrasion	ASTM C1243	< 175 mm ³	< 150 mm ³
Hardness (Mohs scale)		No requirement	≥ 7
Frost Resistance (Freeze/Thaw)	ASTM C1026	No sample must show alterations to surface	No cracking or spalling occurred
Chemical Resistance	ASTM C650	No requirement	Class A
Breaking Strength	ASTM C648	250 lbf or greater	≥ 350 lbf
Coefficient of Friction (static)	ASTM C1028	No requirement	Per collection

Data taken from a representative colored body collection. Individual product testing can be conducted by request.

Coefficient of Friction: All values given are for matte or honed material. No values are given for polished material. Iris U.S. does not recommend polished surfaces in areas subject to exposure from grease, oil or water. (All values are based on ASTM C1028 and Acutest DCOF.)

Travertini Al Contro Packaging

PRODUCT	SIZE	BOX PIECES	BOX SF	PALLET BOXES	PALLET SF	THICKNESS	WEIGHT LB/SF
Floor & Wall Tile	24 x 48	4	31.668	20	633.36	8	3.83
	8 x 48	6	15.585	32	498.72	8	3.69
	12 x 24	8	15.751	32	504.03	8	3.55
	6 x 24	16	15.585	40	623.40	8	3.55
							LB PER PIECE
Mosaics 12 x 12 Sheet	2 x 6	5	4.896	-	-	8	3.55
	2 x 2	5	4.896	-	-	8	3.55
Bullnose	4 x 24	16	10.39	-	-	8	2.00