

Portobello America

SAND WAVES.

Color Body Glazed Porcelain Tile

Sandstone is a sedimentary rock made up of quartz, whose organic and unique designs are sculpted over the years by the work of winds and rains. Sandwaves constitutes a reinterpretation of this rock with a memorable surface, translated to an elegant and universal palette of tones.

Marshmallow and Seedpearl bring a "ton sur ton" of off whites that expand the decoration possibilities of this line, delivering chromatic balance and coziness. Light and Chateau have a gray background, with a sober and contemporary proposal. Dark, on the other hand, brings a more rustic and dramatic counterpoint to this minimalist proposal.

Sandwaves is available in 24x48 and 12x24 sizes on a matte surface. Mosaics with different compositions of shapes and colors expand the possibilities of use for this line.

Sandwaves

Color Body Glazed Porcelain Tile

Sandwaves Marshmallow | V3



24x48 NAT RECT | #79885ET
12x24 NAT BOLD | #79880ET

Single Bullnose

3x12 NAT RECT BN #79974ET
3x24 NAT RECT BN #79979ET

Sandwaves Light | V3

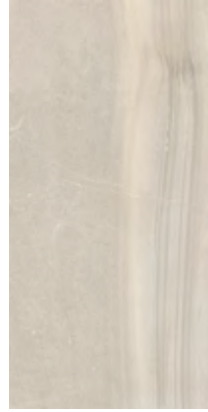


24x48 NAT RECT | #79884ET
12x24 NAT BOLD | #79879ET

Single Bullnose

3x12 NAT RECT BN #79973ET
3x24 NAT RECT BN #79978ET

Sandwaves Seedpearl | V3

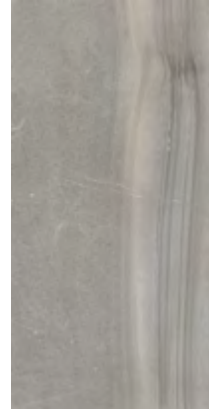


24x48 NAT RECT | #79886ET
12x24 NAT BOLD | #79881ET

Single Bullnose

3x12 NAT RECT BN #79975ET
3x24 NAT RECT BN #79980ET

Sandwaves Chateau Gray | V3



24x48 NAT RECT | #79887ET
12x24 NAT BOLD | #79882ET

Single Bullnose

3x12 NAT RECT BN #79971ET
3x24 NAT RECT BN #79976ET

Sandwaves Dark | V3



24x48 NAT RECT | #79883ET
12x24 NAT BOLD | #79878ET

Single Bullnose

3x12 NAT RECT BN #79972ET
3x24 NAT RECT BN #79977ET

Mos Sq 2x2 Marshmallow | V3



12x12 NAT TEL
#79984ET

Mos Sq 2x2 Light | V3



12x12 NAT TEL
#79983ET

Mos Sq 2x2 Seedpearl | V3



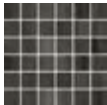
12x12 NAT TEL
#79985ET

Mos Sq 2x2 Chateau Gray | V3



12x12 NAT TEL
#79981ET

Mos Sq 2x2 Dark | V3



12x12 NAT TEL
#79982ET

Mos Little Brick 2x3 Light & Marshmallow | V3



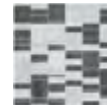
12x12 NAT TEL
#79941ET *

Mos Little Brick 2x3 Seedpearl & Chateau Gray | V3



12x12 NAT TEL
#79942ET *

Mos Little Brick 2x3 Light & Dark | V3



12x12 NAT TEL
#79943ET *

Mos Fit 2x3 Marshmallow | V3



12x12 NAT TEL
#79947ET *

Mos Fit 2x3 Light | V3



12x12 NAT TEL
#79948ET *

Mos Fit 2x3 Seedpearl | V3



12x12 NAT TEL
#79949ET *

Mos Fit 2x3 Chateau Gray | V3



12x12 NAT TEL
#79950ET *

Mos Fit 2x3 Dark | V3



12x12 NAT TEL
#79951ET *

Mos Fit 2x3 Marshmallow & Light | V3



12x12 NAT TEL
#79944ET *

Mos Fit 2x3 Marshmallow & Chateau Gray | V3



12x12 NAT TEL
#79945ET *

Mos Fit 2x3 Light & Dark | V3



12x12 NAT TEL
#79946ET *

* Special Order

TECH DATA

Finish	Freeze Resistant	Shade Variation	Color Body	Water Absorption	Stain Resistant	DCOF AcuTest	Chemical Resistant	Breaking Strength	Abrasion Resistance
NAT	Resistant	V3	✓	≤0.5%	Class A	≥0.42	Class A	≥275lbf	IV

PACKING INFO

Product Size Inches	Actual Size	THICKNESS MM	LBS/CARTON	PCS/CARTON	SF/CARTON	SF/PALLET	LBS/PALLET	CARTON/PALLET
2x2 Mosaic 2x3 Mosaic	11.73x11.73	8	35.01	10	9.49	341.78	1,310.70	36
12x24	11.87x23.87	8	57.23	8	15.50	620	2,339.59	40
24x48	23.56x47.19	8	54.45	2	15.50	542.5	1,955.19	35

For reference only.

AREAS OF USAGE

Classification	Reference Category	Suitable
Interior, Dry	ID	✓
Interior, Wet	IW	✓
Interior, Wet Plus	IW+	✓ 2x2 2x3
Exterior, Wet	EW	
Oils/Greases	O/G	

FORMATS



24x48

12x24

12x12

06x12 COVE BASE

03x12 BULLNOSE

03x24 BULLNOSE

GROUT JOINT

The recommended grout joint:	
1/8" RECT	3/16" BOLD

MORE INFO:



80098ET
version 1

Portobello America
1600 NW 18th Street, Suite 708
Pompano Beach, FL 33069

General Inquiries:
info@portobelloamerica.com
Phone: 1-954-376-6259



#WHYTILE



TCNA



Sandwaves Dark