

CRAFTER™

COLORBODY™ & GLAZED PORCELAIN FLOOR AND GLAZED CERAMIC MOSAIC
WITH STEPWISE™ TECHNOLOGY

AMERICAN OLEAN®



CONCRETE LOOK



AMERICAN OLEAN®
PROVEN IN TILE™

CRAFTER™

Transform any space to reflect your artistic vision with Crafter™, a concrete look inspired by visuals of unique fibers found in craft paper. Popular large format sizes available in five on trend colors offer a clean canvas to achieve various design aspirations, two 8" hex decos create an eye-catching 3D effect with a strong aesthetic appeal. Reach new heights of contemporary design in both commercial and residential spaces.



STEPWISE™

50% MORE
SLIP RESISTANT
THAN ORDINARY TILE*

*When compared to tile meeting ANSI Standards

Cover photo features Paper Block 8 x 8 Hex on the floor.

Above photo features Sketch 24 x 24 on the floor and Waterwood™ White Oak 8 x 40 on the wall.

CRAFTER™

COLORBODY™ & GLAZED PORCELAIN FLOOR AND GLAZED CERAMIC MOSAIC
WITH STEPWISE™ TECHNOLOGY

AMERICAN OLEAN®

FINISHES: MATTE

USAGE



FLOOR



WALL



COUNTERTOP



SHOWER
FLOOR



EXTERIOR
FLOOR

MATERIAL



PC



CG



PG

PRICING



LOW HIGH

SPECIAL FEATURES



STEPWISE™



TRUEEDGE™



MADE IN
THE U.S.A.



LARGE
FORMAT



MOSAIC/
DECO



ENCAUSTIC



TERRAZZO



PAVER



CUSTOMIZE

CONCRETE LOOK

COLORBODY™ PORCELAIN FLOOR TILE



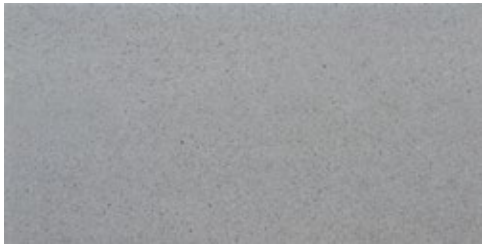
PAPIER-MACHE CF15



TWILL CF16



ORIGAMI CF17



SKETCH CF18



INK CF19

GLAZED PORCELAIN 8" HEXAGON FLOOR TILE

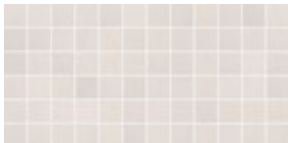


PAPER BLOCK CF20



CARBON BLOCK CF21

GLAZED CERAMIC 2 x 2 MOSAIC



PAPIER-MACHE CF15



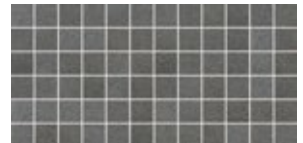
TWILL CF16



ORIGAMI CF17



SKETCH CF18



INK CF19



WATERPROOF



STAINPROOF



DENTPROOF



SCRATCH-RESISTANT



FIRE-RESISTANT



CLIMATEPRO™



SIMPLICLEAN™

VISIT AMERICANOLEAN.COM/WHYTILE FOR A COMPLETE LIST OF QUALIFICATIONS AND EXCLUSIONS.

FINISHES: MATTE

USAGE



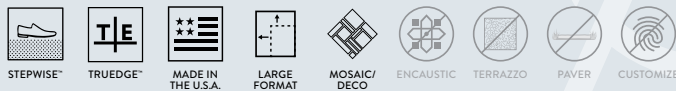
MATERIAL



PRICING



SPECIAL FEATURES



CONCRETE LOOK

SIZES

			THICKNESS	SQ. FT./ CARTON	PIECES/ CARTON
	24 x 24 Floor Tile	23-3/8" x 23-3/8" (59.44 cm x 59.44 cm)	5/16"	15.20	4
	12 x 24 Floor Tile	11-5/8" x 23-3/8" (29.56 cm x 59.44 cm)	5/16"	15.12	8
	8" Hexagon Floor Tile	7-7/8" x 9-1/8" (20.04 cm x 23.16 cm)	5/16"	9.37	25
	2 x 2 Mosaic (Dot-mounted)	12" x 24" Sheet (30.48 cm x 60.96 cm Sheet)	1/4"	24.00	12

INSTALLATION & PRICING

Grout Joint Recommendation	Shade Variation
Floor: 1/8" (3/16" when installing tile with a length 15" or greater in a staggered brick-joint pattern; overlap should not exceed 33%.) Mosaic: 1/8"	 MEDIUM (V2)

PERFORMANCE CHARACTERISTICS

	ASTM#	FLOOR RESULT	MOSAIC RESULT
Water Absorption	C373	< 0.5%	< 3.0%
Breaking Strength	C648	> 275 lbs.	> 250 lbs.
Scratch Hardness	MOHS	8.0	8.0
Chemical Resistance	C650	Resistant	Resistant

For additional information on test results, visit us at: americanolean.com/information/TestResults.

DURABILITY

Floor Surface Wear Resistance			
1	Residential Bathrooms	3	All Residential / Light Commercial
2	All Residential Areas	4	All Residential / Commercial

FEATURES

All or select items within this series meet the requirements for these qualifications.
For more information visit americanolean.com.

TRIM

			NUMBER	PIECES/ CARTON
	Bullnose	3 x 24	P43F9	10
	Cove Base	6 x 12	P36C9TB	22
	Cove Base Corner	1 x 6	PC36C9TB	15

APPLICATIONS

	TARGET DCOF WET	SUITABLE
Dry & Level – Interior Floor	N/A	●
Wet & Level – Interior Floor	≥ 0.42	●
Shower Floors (Residential or Light Commercial)	≥ 0.42	●*
Exterior Floor Applications (including patios, pool decking & other wet areas with minimal footwear)	≥ 0.60	●
Ramps & Inclines	≥ 0.65	
Walls/Backsplashes	N/A	●
Countertops	N/A	●
Pool Linings	N/A	●*

A DCOF value of ≥0.42 is the standard for tiles specified for level interior spaces expected to be walked upon when wet, as stated in ANSI A137.1-A326.3. For more information about DCOF and the DCOF AcuTest™, visit americanolean.com/DCOF.

APPLICATION NOTES:

Suitable for exterior applications (provided it is noted as suitable in the applications chart above) in freezing and non-freezing climates, when proper installation methods are followed.

Mosaics suitable for exterior applications (provided it is noted as suitable in the applications chart above) in non-freezing climates, when proper installation methods are followed.

*Mosaic tile only.

NOTES

Since there are variations in all fired ceramic and natural products, tile and trim supplied for your particular installation may not match samples. Final confirmation should be made from actual tiles and trim prior to installation. Manufactured in accordance with ANSI A137.1 standards.

Not for use on ramps. Water, oil, grease, improper drainage and certain footwear can create slippery conditions. Floor applications expected to be exposed to these conditions require extra caution in product selection.

For additional information refer to "Factors to Consider" at: americanolean.com/Factors.Special consideration needs to be given when installing tiles greater than 15 inches. Please refer to americanolean.com/LargeTiles for more information.

Special care should be taken when grouting with dark pigmented colors. A grout release is recommended to prevent finely powdered pigments from lodging in the pores of the surface. Use of a latex modified thin-set is recommended for installation.