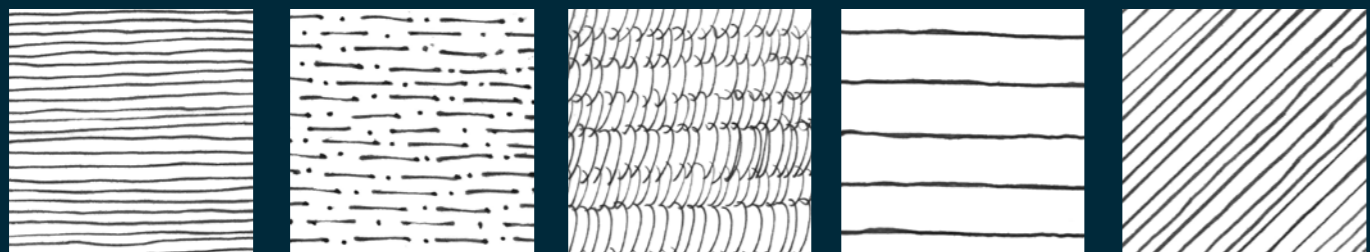




Bestow

Reframing the Makers Heritage

MI  **E** *stone*
Sustainable Tile, Made in the USA



Bestow

Reframing the Makers Heritage

Bestow porcelain tile collection highlights fiber arts in Bandura Design's inaugural collaboration with MILE[®]stone brand stories. Homespun artist's weaving, braiding, and macrame knotting inspire the tile's color, texture, and pattern.

For millennia, the art of weaving has been passed down generationally, culturally, and communally to offer heightened expressions of history and heritage. Time, tradition, and talent has - and continues to - create artistry using hair, thread, tapestry and whatever else is available to create delicate and durable art.

As many great artists are unsung, so often too have been the work of women's hands. Bestow celebrates their rich history and modern mastery with a tile collection to transform any space with imaginative expression.

Allow the Bestow collection from Bandura Design to empower you to express the stories, teachings, and emotions, bestowed upon us by generations of women.

the art of weaving

For thousands of years, the world over, women have handed down traditional knowledge of hand-made creations used both to survive and thrive as individuals and as a community.



**bestowed
upon us by
generations
of women**

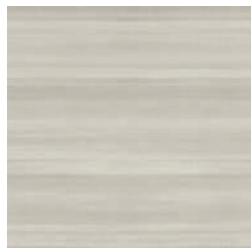


Arku

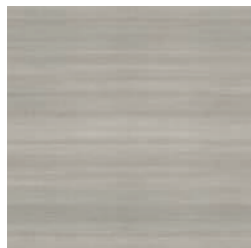
MATTE rectified



White



Warm Grey



Cool Grey



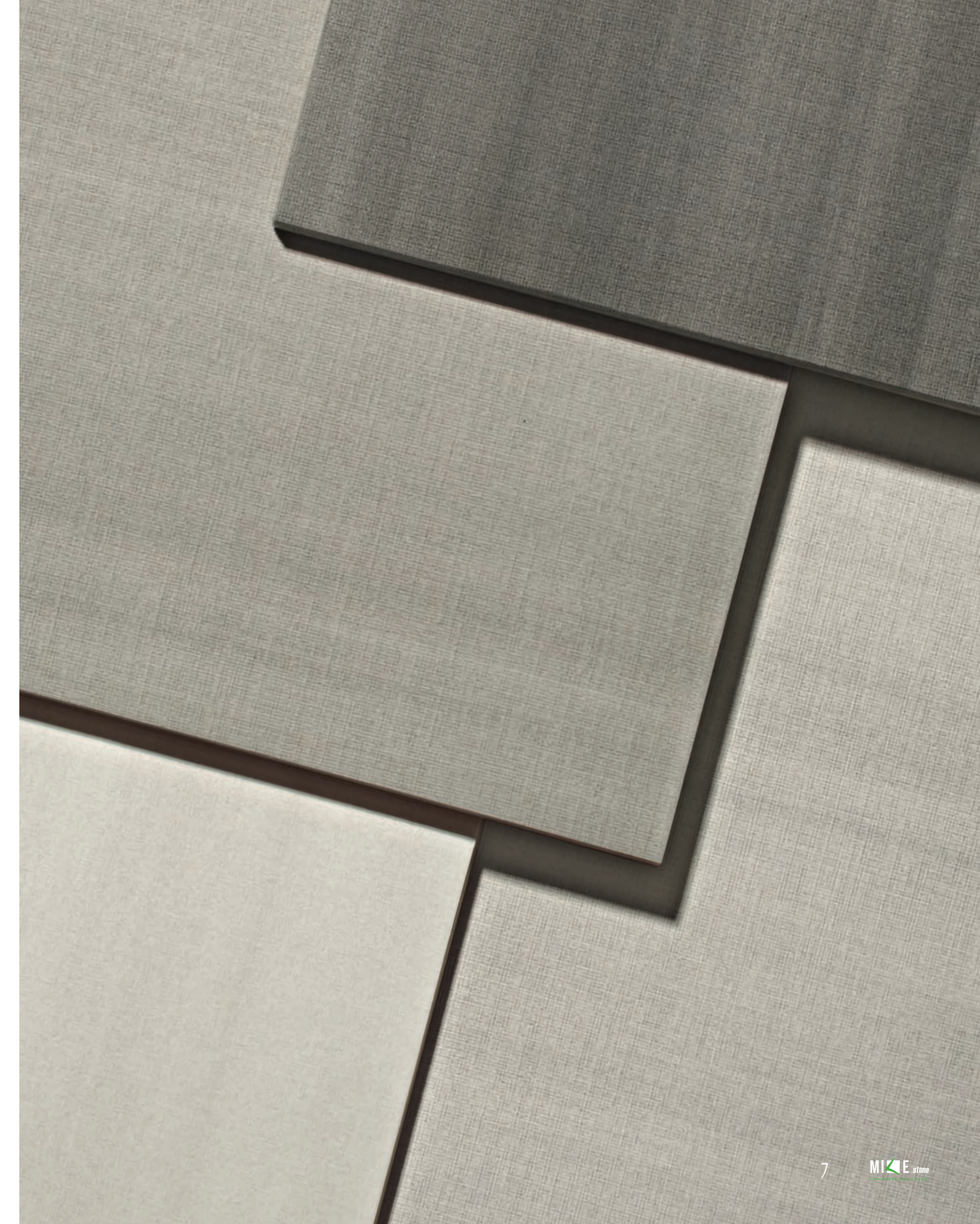
Charcoal



12"x24"



24"x48"



Telares

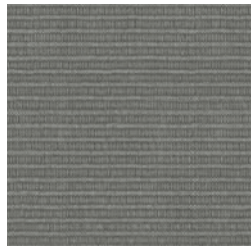
MATTE rectified



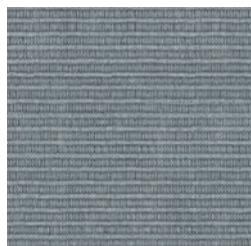
Cream



Light Grey



Charcoal



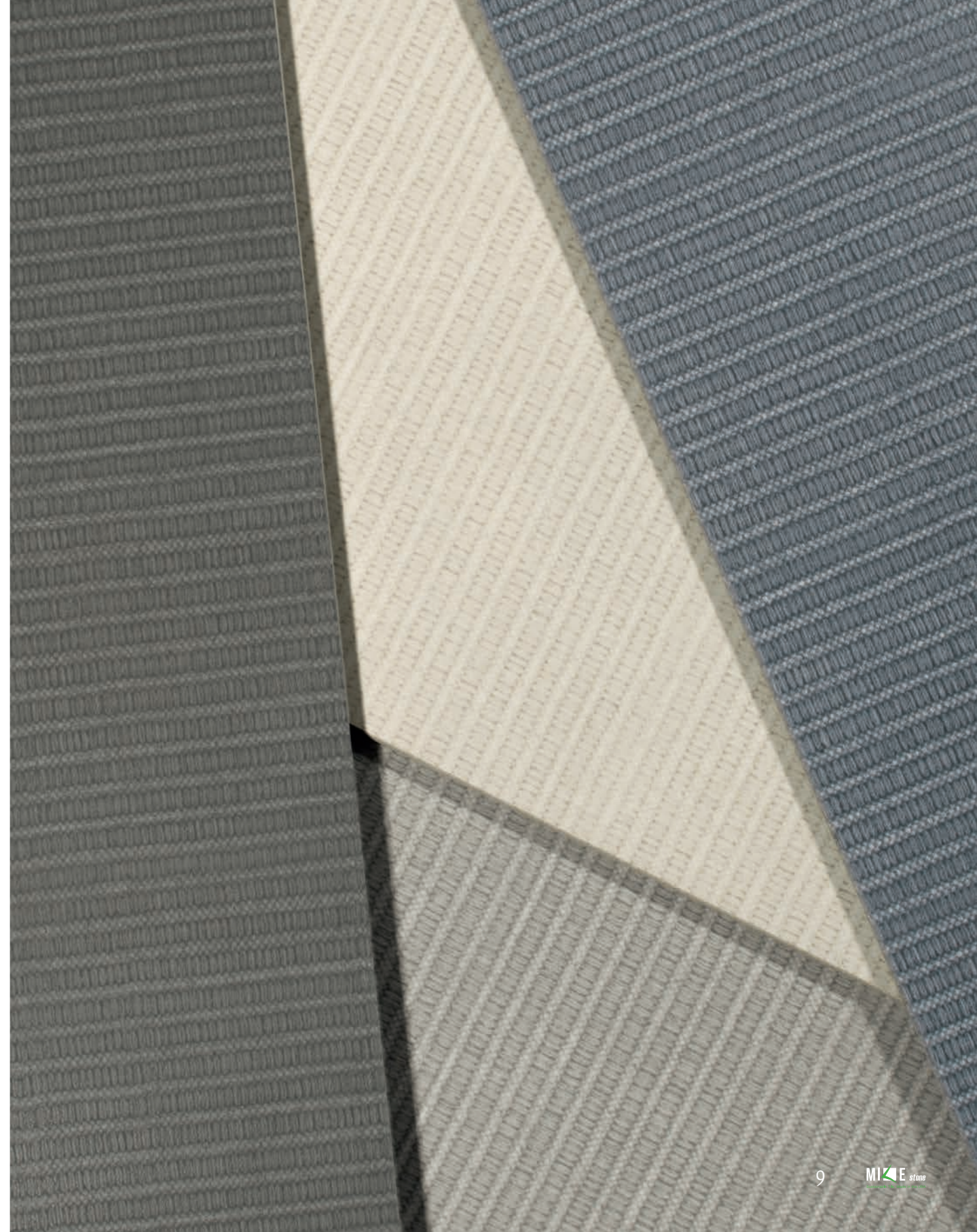
Indigo



12"x24"

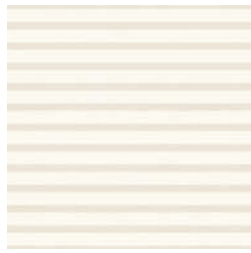


24"x48"



Saori

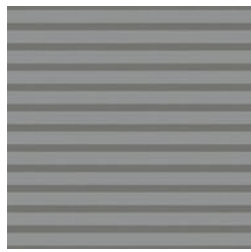
MATTE rectified



Cream



Light Grey



Charcoal



Indigo



12"x12"



12"x24"



24"x24"

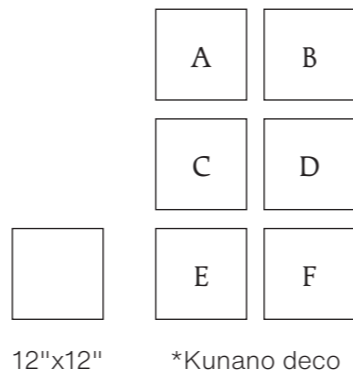
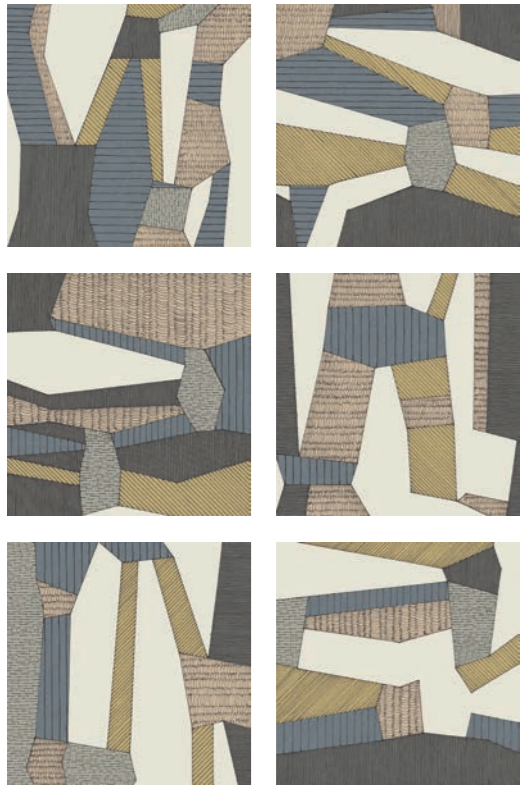


24"x48"



Kunano

MATTE rectified



*Kunano deco are packaged in a random manner, not labeled A-B-C-D-E-F.
MILE[®]stone cannot guarantee which faces are in each package.

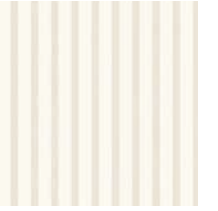


Wall

Bestow_Telares_24"x48"_Light_Grey_Matte
Bestow_Saori_12"x12"_Indigo_Matte

Floor

Bestow_Arku_24"x48"_Warm_Grey_Matte



Wall

Bestow_Saori_12"x12" _12"x24" _Cream_Matte
Bestow_Saori_24"x24" _Cream_Matte

Floor

Bestow_Telares_24"x48" _Cream_Matte



Wall

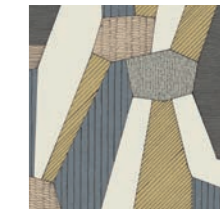
Bestow_Saori_12"x12"_12"x24"_Light Grey_Matte
Bestow_Saori_24"x24"_Light Grey_Matte

Floor

Bestow_Arku_24"x48"_Cool_Grey_Matte

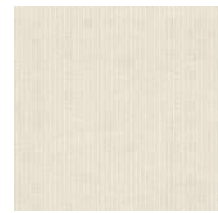
Bestow





Wall
Bestow_Kunano_12"x12"_Matte

Floor
Bestow_Arku_24"x48"_White_Matte



Wall

Bestow_Saori_12"x24" Cream_Matte
Bestow_Arku_12"x24" White_Matte
Bestow_Telares_12"x24" Cream_Matte

Floor

Bestow_Arku_12"x24" White_Matte

Bestow



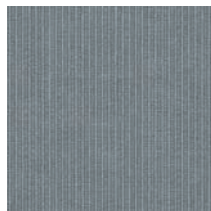
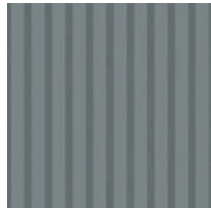


Wall

Bestow_Telares_24"x48"_Cream_Matte
Bestow_Telares_24"x48"_Indigo_Matte

Floor

Bestow_Arku_24"x48"_White_Matte
Bestow_Saori_12"x12"_Charcoal_Matte
Bestow_Saori_12"x12"_{24"x24"}_Light_Grey_Matte



Wall

Bestow_Saori_24"x48"_Indigo_Matte

Floor

Bestow_Arku_24"x48"_Cool_Grey_Matte

Bestow_Telares_24"x48"_Indigo_Matte

Bestow_Saori_12"x12"_Indigo_Matte

Bestow



Wall

Bestow_Saori_24"x48"_Indigo_Matte
Bestow_Telares_24"x48"_Light_Grey_Matte

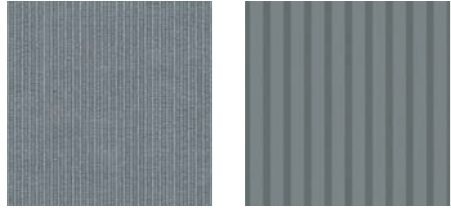
Floor

Bestow_Arku_24"x48"_Warm_Grey_Matte



Wall
Bestow_Kunano_12"x12" _Matte

Bestow



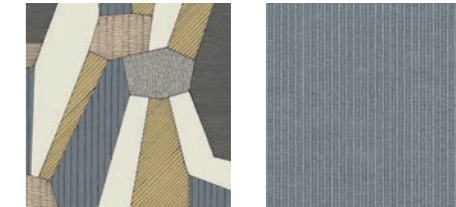
Wall

- Bestow_Telares_12"x12"__Indigo_Matte
- Bestow_Saori_12"x12"__12"x24"__Indigo_Matte
- Bestow_Saori_24"x48"__Indigo_Matte
- Bestow_Saori_24"x48"__Cream_Matte
- Bestow_Kunano_12"x12"__Matte

Floor

- Bestow_Arku_24"x48"__White_Matte
- Bestow_Telares_24"x24"__Indigo_Matte

Bestow



Wall

Bestow_Telares_24"x48"_Indigo_Matte
Bestow_Kunano_12"x12"_Matte

Floor

Bestow_Kunano_12"x12"_Matte
Bestow_Telares_24"x48"_Indigo_Matte
Bestow_Arku_24"x48"_Cool_Grey_Matte

Technical Sheet

Arku

WHITE

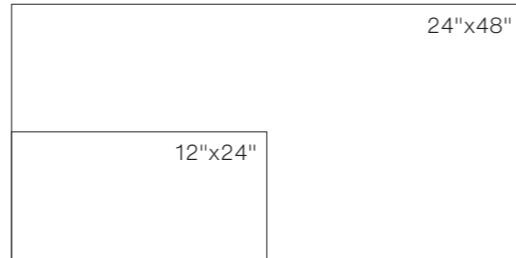
Sizes and finishes:

- 12"x24"
- 1104137 Matte rectified
- 24"x48"
- 1104111 Matte rectified
- 3"x12" Bullnose
- 1104543 Matte rectified



Applications:

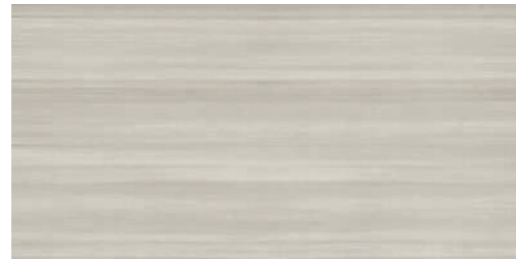
- Floor
- Wall



WARM GREY

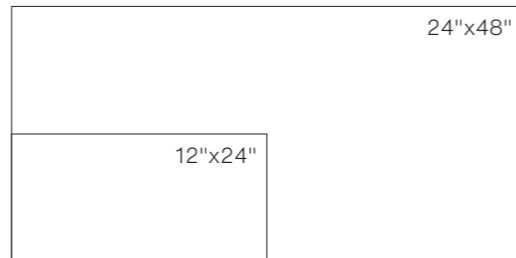
Sizes and finishes:

- 12"x24"
- 1104138 Matte rectified
- 24"x48"
- 1104112 Matte rectified
- 3"x12" Bullnose
- 1104544 Matte rectified



Applications:

- Floor
- Wall



COOL GREY

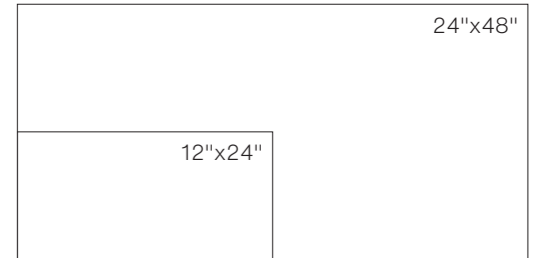
Sizes and finishes:

- 12"x24"
- 1104139 Matte rectified
- 24"x48"
- 1104113 Matte rectified
- 3"x12" Bullnose
- 1104545 Matte rectified



Applications:

- Floor
- Wall



CHARCOAL

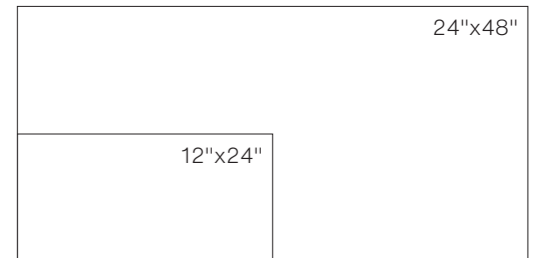
Sizes and finishes:

- 12"x24"
- 1104140 Matte rectified
- 24"x48"
- 1104114 Matte rectified
- 3"x12" Bullnose
- 1104546 Matte rectified



Applications:

- Floor
- Wall



Telares

CREAM

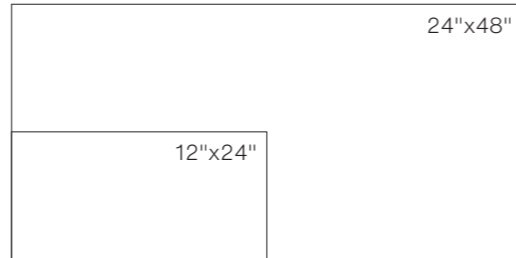
Sizes and finishes:

- 12"x24"
- 1104133 Matte rectified
- 24"x48"
- 1104115 Matte rectified



Applications:

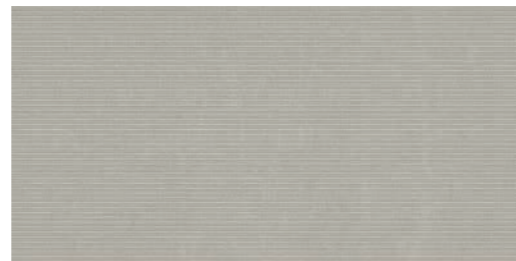
- Floor
- Wall



LIGHT GREY

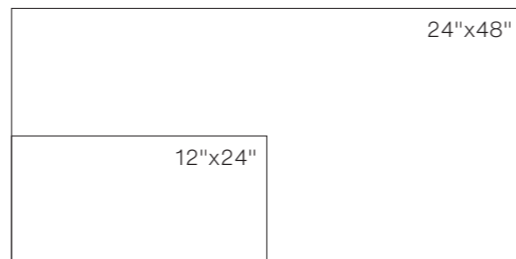
Sizes and finishes:

- 12"x24"
- 1104134 Matte rectified
- 24"x48"
- 1104116 Matte rectified



Applications:

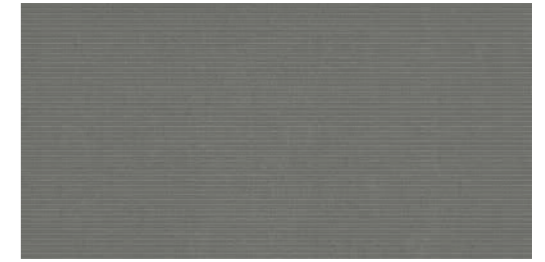
- Floor
- Wall



CHARCOAL

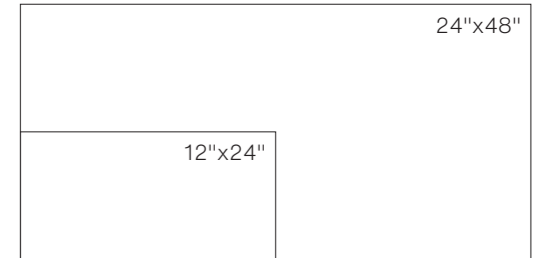
Sizes and finishes:

- 12"x24"
- 1104135 Matte rectified
- 24"x48"
- 1104117 Matte rectified



Applications:

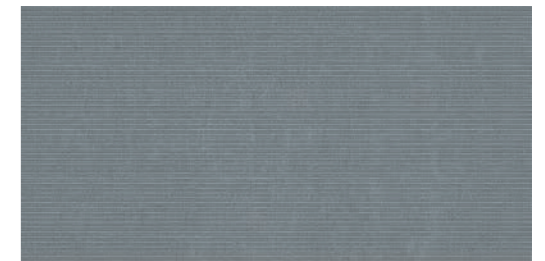
- Floor
- Wall



INDIGO

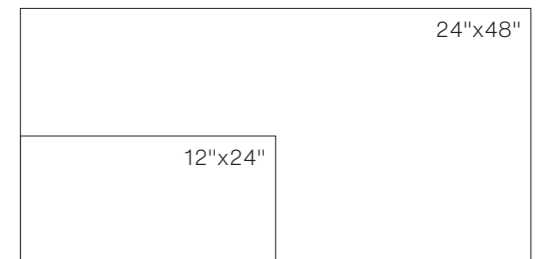
Sizes and finishes:

- 12"x24"
- 1104136 Matte rectified
- 24"x48"
- 1104118 Matte rectified



Applications:

- Floor
- Wall



Saori

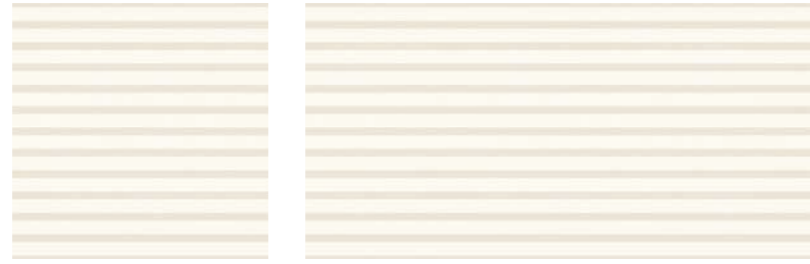
CREAM

Sizes and finishes:

- 12"x12"
1104142 Matte rectified
- 12"x24"
1104128 Matte rectified
- 24"x24"
1104123 Matte rectified
- 24"x48"
1104119 Matte rectified

Applications:

- Floor
- Wall



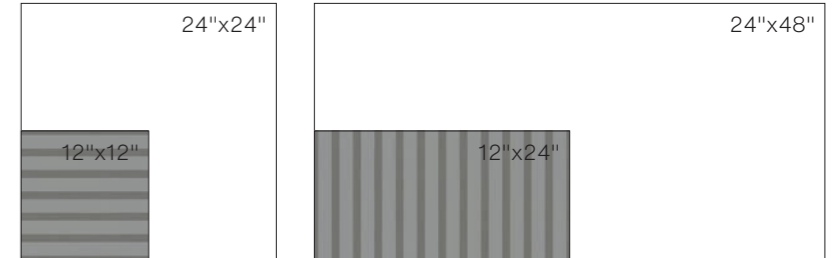
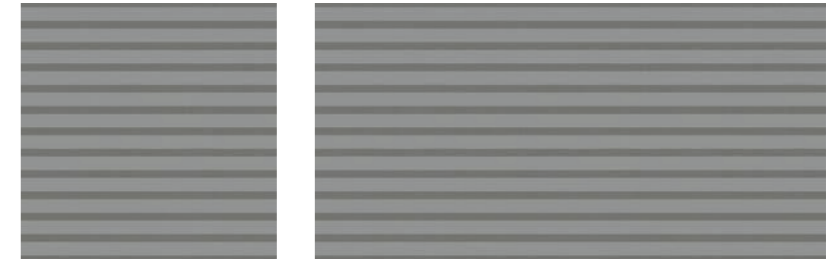
CHARCOAL

Sizes and finishes:

- 12"x12"
1104144 Matte rectified
- 12"x24"
1104131 Matte rectified
- 24"x24"
1104125 Matte rectified
- 24"x48"
1104121 Matte rectified

Applications:

- Floor
- Wall



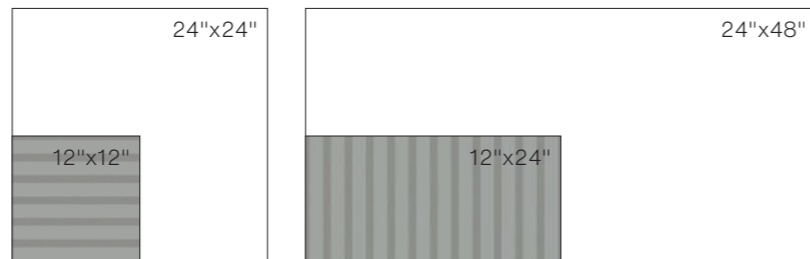
LIGHT GREY

Sizes and finishes:

- 12"x12"
1104143 Matte rectified
- 12"x24"
1104130 Matte rectified
- 24"x24"
1104124 Matte rectified
- 24"x48"
1104120 Matte rectified

Applications:

- Floor
- Wall



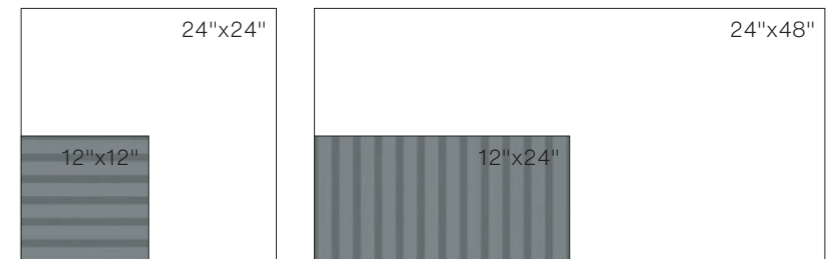
INDIGO

Sizes and finishes:

- 12"x12"
1104145 Matte rectified
- 12"x24"
1104132 Matte rectified
- 24"x24"
1104127 Matte rectified
- 24"x48"
1104122 Matte rectified

Applications:

- Floor
- Wall



Kunano

Sizes and finishes:

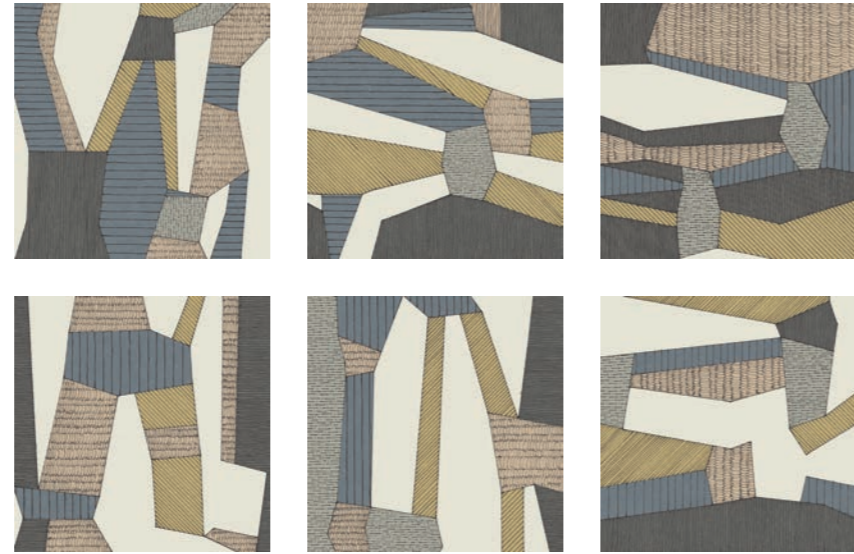
12"x12" Deco

1104141 Matte rectified

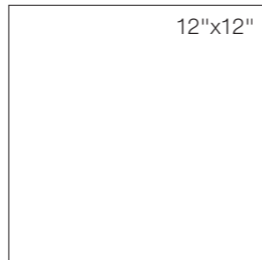
Applications:

Floor

Wall

















RANDOM MIX



Technical Specifications

This product meets or exceeds all standards described in ANSI A137.1 & A137.3.

	SPECS	TEST METHOD	INDUSTRY STANDARD	MILE®stone VALUES	
	WATER ABSORPTION	ASTM C373	≤0.5%	≤0.5%	
	SURFACE WEAR RESISTANCE	ANSI A137.1	Surface Wear-resistance properties of glazed vitreous and porcelain tiles.	ALL RESIDENTIAL / COMMERCIAL	
	CHEMICAL RESISTANCE	ASTM C650	A tile sample is placed in continuous contact with a variety of chemicals for 24 hours. Sample must show no visible defects.	NOT AFFECTED	
	D.C.O.F. AcuTest®	ANSI A326.3	INDOOR ≥0.42 WET	≥0.42 WET	
			OUTDOOR >0.55 WET	>0.55 WET 2CM & GRIP	
	STAIN RESISTANCE	ASTM C1378	Surfaces are exposed to staining agents for 24 hours followed by four cleaning procedures. Results are recorded post cleaning.	NOT AFFECTED	
	BREAKING STRENGTH GAUGED PORCELAIN	ASTM C1505	≥175 lbf	≥200 lbf	
	BREAKING STRENGTH	ASTM C648	≥275 lbf	≥300 lbf	
	BREAKING STRENGTH OUTDOOR 2CM	ASTM 1505	2000 lbf (10.9 kN)	≥2500 lbf	
	RESISTANCE TO FREEZE	ASTM C1026	A tile sample is subjected to repeated processes of freezing and thawing. Sample must show no visible defects.	RESISTANT	
	WARPAGE EDGE	ASTM C485	±0.40% or ±0.05 in (±1.8 mm)	± 0.40%	Rectified
	WARPAGE DIAGONAL	ASTM C485	±0.40% or ±0.07 in (±1.8 mm)	± 0.40%	Rectified
	WEDGING	ASTM C502	±0.25% or ±0.03 in (±0.8 mm)	± 0.25%	Rectified
	WARPAGE EDGE	ASTM C485	±0.50% or ±0.07 in (±1.8 mm)	± 0.50%	Calibrated
	WARPAGE DIAGONAL	ASTM C485	±0.50% or ±0.07 in (±1.8 mm)	± 0.50%	Calibrated
	WEDGING	ASTM C502	±0.50% or ±0.08 in (±2.0 mm)	± 0.50%	Calibrated
	THICKNESS	ASTM C499	Range: ± 0.04 in	≤0.04 in	

• Due to the inherent nature of fired porcelain tile, it is important to note that the coefficient of friction may vary within and between product runs.














Cleaning & Maintenance / Routine Care Instructions



Scan the QR code with your smartphone.



Green Memberships & Accreditations

	DESCRIPTION
	Declare labels disclose all intentionally added ingredients and residuals present in the final product. Being Red List Free means the worst materials, chemicals, and elements for human and environmental health are not present within our products.
	The Health Product Declaration Collaborative transparency declaration for all of Florim USA's naturally occurring materials.
	Certification of plant and product specific Environmental Product Declaration (EPD) which tracks environmental impacts from the production of porcelain tile.
	Tile Council of North America and the American National Standards Institute's standard for sustainability and environmental impact.
	Underwriter's Laboratories certification of low emitting materials. Florim USA is Green Guard Gold certified.
	Defines post-consumer content of as much as 3% recycled material which reduces landfill impact. Certified by Bureau Veritas.
	Defines pre-consumer content of as much as 45% recycled material which reduces our carbon footprint. Certified by Bureau Veritas.
	Florim USA's sustainability and social practices support the mission of The International Living Future Institute which strives to create a socially just, culturally rich, and ecologically restorative community.
	USGBC is committed to suit a more sustainable life. Florim USA supports this mission by manufacturing products which aid architects in achieving USGBC certification.
	Florim USA sources >95% raw material within a 500 mile radius, which results in a smaller carbon footprint.
	Florim USA actively participates in the Tile Council of North America which allows us to be on the forefront of advances in the tile industry and its standards.
	The Tennessee Recycling Coalition is dedicated to promoting recycling and sustainable material management practices, and awarded Florim USA the Tennessee Recycler of the Year award for 2020.
	ISO 9001 & ISO 14001 are globally recognized standards. ISO 9001 certifies that Florim USA products and practices continually meet and exceed customer and regulatory requirements. ISO 14001 certifies that Florim USA complies with environmental regulations and that its manufacturing practices are environmentally conscious.
	Florim USA updated its corporate charter in 2022 to become a Benefit Corporation. Our company is committed to maintaining this designation through initiatives focused on sustainability, social responsibility, ethical business practices and transparent, annual reporting on our social and environmental performance.

Progress that invests in the entire society

As an active member of the US Green Building Council, MILE[®]stone spreads awareness to the community and encourages the use of building solutions through environmentally friendly practices.

Our products positively contribute to the requirements for obtaining the LEED (Leadership in Energy and Environmental Design) and WELL (IWBI) certifications.

A commitment to environmental sustainability and responsibility

We are committed to conscious development that minimizes the negative impact of manufacturing production on the environment. Our general approach to sustainability intersects with our business strategy to embrace three areas of responsibility: economic, social, and environmental. Some ways we prove this are:

- Products containing as much as 45% recycled content.
- Post-consumer recycled content levels as much as 3%.
- Zero industrial wastewater discharge.
- A 99% internal process recycling rate.
- Local sourcing of >95% raw materials (within 500-mile radius of factory) resulting in low transportation related carbon emissions.

MILE[®]stone is taking these and other steps, as well as actively investing to reduce carbon emissions to ensure that we reach full carbon neutrality.



MADE IN THE USA



300 International Blvd. Clarksville, TN 37040 | www.milestonetiles.com | 1-877-356-7461



Sustainable Tile, Made in the USA